



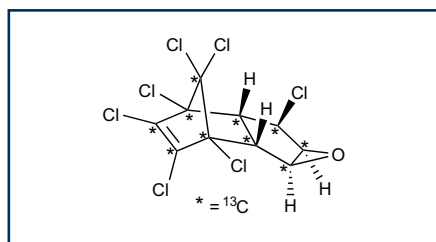
October 5, 2022

## NEW PRODUCTS

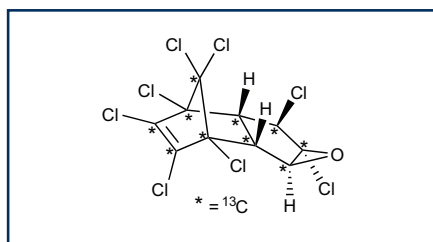
### Mass-Labelled Organochlorine Pesticides

Based on the positive response that we received for our initial offering of organochlorine pesticide (OCP) certified reference standards, we decided to expand our inventory of mass-labelled standards for this important compound class. Since the release of our new catalogue, our synthetic chemists have worked to produce six additional targets (**MHpChlor-xEp**, **MOxyChlorD**, **MtNChlor**, **MaENDOS**, **MbENDOS**, and **MENDOS-S**; see Table A for a full listing of our current mass-labelled OCP standards).

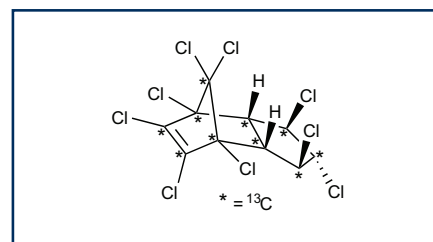
Furthermore, we intend to prepare and release additional mixtures of both native and mass-labelled OCPs in the near future to provide our customers with a comprehensive selection of standards to support their analytical needs. Please contact us at [info@well-labs.com](mailto:info@well-labs.com) if you have any product suggestions or are interested in learning more about this expanding product line.



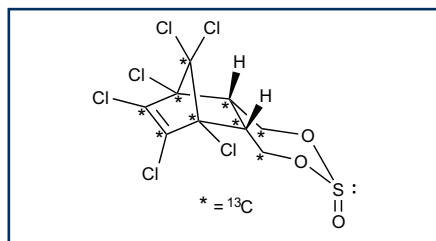
(<sup>13</sup>C<sub>10</sub>)Heptachlor-exo-epoxide (isomer B)



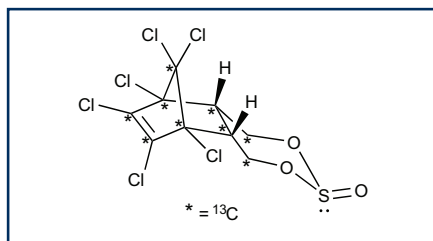
(<sup>13</sup>C<sub>10</sub>)Oxychlorthane



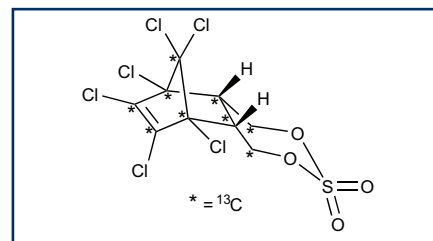
*trans*-(<sup>13</sup>C<sub>10</sub>)Nonachlor



(<sup>13</sup>C<sub>9</sub>)Endosulfan I ( $\alpha$ )



(<sup>13</sup>C<sub>9</sub>)Endosulfan II ( $\beta$ )



(<sup>13</sup>C<sub>9</sub>)Endosulfan Sulfate

Distributed Throughout Europe and Middle East By-

Greyhound Chromatography & Allied Chemicals  
6 Kelvin Park, Birkenhead,  
Merseyside, CH41 1LT, U.K.  
Tel: (+44)-0-151-649-4000 Fax: (+44)-0-151-649-4001  
E-mail: [info@greyhoundchrom.com](mailto:info@greyhoundchrom.com)  
Web: [www.greyhoundchrom.com](http://www.greyhoundchrom.com)



Quality  
ISO 9001

Table A: Wellington's Current List of Mass-Labelled OCP Certified Reference Standards.

Catalogue Number	Product (nonane)	Qty	Conc
<b>MPeCB</b>	Pentachloro( <sup>13</sup> C <sub>6</sub> )benzene	1.2 mL	100 µg/mL
<b>MHxCB</b>	Hexachloro( <sup>13</sup> C <sub>6</sub> )benzene	1.2 mL	100 µg/mL
<b>MaHCH</b>	α-1,2,3,4,5,6-Hexachloro( <sup>13</sup> C <sub>6</sub> )cyclohexane	1.2 mL	100 µg/mL
<b>MbHCH</b>	β-1,2,3,4,5,6-Hexachloro( <sup>13</sup> C <sub>6</sub> )cyclohexane	1.2 mL	100 µg/mL
<b>MgHCH</b>	γ-1,2,3,4,5,6-Hexachloro( <sup>13</sup> C <sub>6</sub> )cyclohexane	1.2 mL	100 µg/mL
<b>MdHCH</b>	δ-1,2,3,4,5,6-Hexachloro( <sup>13</sup> C <sub>6</sub> )cyclohexane	1.2 mL	100 µg/mL
<b>M44P-DMDT</b>	<i>p,p'</i> -( <sup>13</sup> C <sub>12</sub> )Methoxychlor	1.2 mL	100 µg/mL
<b>M24P-DDD</b>	1,1-Dichloro-2-[2-chloro( <sup>13</sup> C <sub>6</sub> )phenyl]-2-[4-chloro( <sup>13</sup> C <sub>6</sub> )phenyl]ethane	1.2 mL	100 µg/mL
<b>M44P-DDD</b>	1,1-Dichloro-2,2-bis[4-chloro( <sup>13</sup> C <sub>6</sub> )phenyl]ethane	1.2 mL	100 µg/mL
<b>M24P-DDE</b>	1,1-Dichloro-2-[2-chloro( <sup>13</sup> C <sub>6</sub> )phenyl]-2-[4-chloro( <sup>13</sup> C <sub>6</sub> )phenyl]ethene	1.2 mL	100 µg/mL
<b>M44P-DDE</b>	1,1-Dichloro-2,2-bis[4-chloro( <sup>13</sup> C <sub>6</sub> )phenyl]ethene	1.2 mL	100 µg/mL
<b>M24P-DDT</b>	1,1,1-Trichloro-2-[2-chloro( <sup>13</sup> C <sub>6</sub> )phenyl]-2-[4-chloro( <sup>13</sup> C <sub>6</sub> )phenyl]ethane	1.2 mL	100 µg/mL
<b>M44P-DDT</b>	1,1,1-Trichloro-2,2-bis[4-chloro( <sup>13</sup> C <sub>6</sub> )phenyl]ethane	1.2 mL	100 µg/mL
<b>MHxChlor</b>	( <sup>13</sup> C <sub>10</sub> )Chlordene	1.2 mL	100 µg/mL
<b>MHpChlor</b>	( <sup>13</sup> C <sub>10</sub> )Heptachlor	1.2 mL	100 µg/mL
<b>NEW MHPChlor-xEp</b>	( <sup>13</sup> C <sub>10</sub> )Heptachlor- <i>exo</i> -epoxide (isomer B)	1.2 mL	100 µg/mL
<b>McChlorD</b>	<i>cis</i> -( <sup>13</sup> C <sub>10</sub> )Chlordane (α)	1.2 mL	100 µg/mL
<b>MtChlorD</b>	<i>trans</i> -( <sup>13</sup> C <sub>10</sub> )Chlordane (γ)	1.2 mL	100 µg/mL
<b>NEW MOxyChlorD</b>	( <sup>13</sup> C <sub>10</sub> )Oxychlordane	1.2 mL	100 µg/mL
<b>McNChlor</b>	<i>cis</i> -( <sup>13</sup> C <sub>10</sub> )Nonachlor	1.2 mL	100 µg/mL
<b>NEW MtNChlor</b>	<i>trans</i> -( <sup>13</sup> C <sub>10</sub> )Nonachlor	1.2 mL	100 µg/mL
<b>MALD</b>	( <sup>13</sup> C <sub>12</sub> )Aldrin	1.2 mL	100 µg/mL
<b>MISOD</b>	( <sup>13</sup> C <sub>12</sub> )Isodrin	1.2 mL	100 µg/mL
<b>MDELD</b>	( <sup>13</sup> C <sub>12</sub> )Dieldrin	1.2 mL	100 µg/mL
<b>MEND</b>	( <sup>13</sup> C <sub>12</sub> )Endrin	1.2 mL	100 µg/mL
<b>MKEP</b>	( <sup>13</sup> C <sub>10</sub> )Kepone	1.2 mL	100 µg/mL
<b>MMRX</b>	( <sup>13</sup> C <sub>10</sub> )Mirex	1.2 mL	100 µg/mL
<b>NEW MaENDOS</b>	( <sup>13</sup> C <sub>9</sub> )Endosulfan I (α)	1.2 mL	100 µg/mL
<b>NEW MbENDOS</b>	( <sup>13</sup> C <sub>9</sub> )Endosulfan II (β)	1.2 mL	100 µg/mL
<b>NEW MENDOS-S</b>	( <sup>13</sup> C <sub>9</sub> )Endosulfan Sulfate	1.2 mL	100 µg/mL

Note: A full list of analogous native OCP Certified Reference Standards is available in our catalogue.

